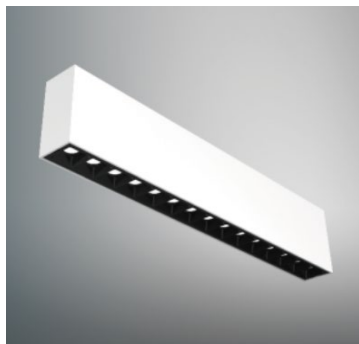


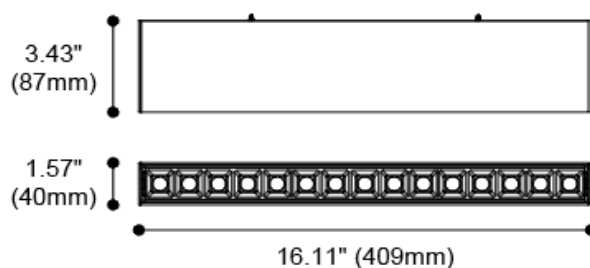


KANO-II-15-SF



Product specification

INTERIOR SURFACE MOUNTED CEILING LIGHTS



Technical Specification

Article number	2013.169-15
LED Consumption	2.2W x15
Fixture Consumption	33W
Current / Voltage	700mA / -
CRI	90+
CCT	3000K
LED Lumen ^{*1}	200lm x15
Delivered Lumen	2313lm
Beam Angle available	15°/30°/40° (Reflector)

Driver Technical Specification (Built-in)

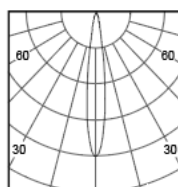
Driver Brand	-	Driver Model	-
Input voltage / Frequency range	-	Output Current / Voltage	-
Dimming / Flicker	-	Certification	-
Power Factor	-	Warranty	-

Technical character

Products Standard	IEC 60598-1	Luminaire	extruded aluminum
	IEC 62031	Trim	-
Insulation	CLASS II	Reflector	PC
Protection	IP20	Heat sink	extruded aluminum
Tilt / Rotate	non / non	Fixture color available	white / black
Operating temperature	0~35°C	Baffle	PC
Average Failure Time	L70(6k) >36000 (h)	Baffle Color available	piano black

Accessories

Photometric



h(m)	D(m)	E(1x)
15°		
1.0	0.25	20028
2.0	0.51	5007
3.0	0.76	2225
4.0	1.02	1252
5.0	1.28	801

Remarks



*1. LUMEN : for LED chip test result based on Tc=85°C. This is the ideal (Maximum) lumen. This lumen information is from the LED supplier.